



## Installing HySpell Armenian Spellchecker 1.0

This document covers the details for a successful installation of HySpell Armenian Spellchecker 1.0 software package.

To install HySpell Armenian Spellchecker 1.0, download and unzip the package in a folder (you will need an encryption key to be able to unzip). The content of the package after unzipping are as follows:

- **DotNETFX35SP1** folder
- **Images** folder
- **Keyboard** folder
- **SpellChecker** folder
- **Installation.htm** HTML file

Running the **Installation.htm** HTML file will display the installation in a few simple steps. As prerequisite for a successful installation of the HySpell software, it is required to have the operating systems Windows XP, Windows Vista or above, and [Microsoft Office 2007 Word](#) already installed on your system. The installer also requires the Microsoft .NET Framework 3.5 SP1, and therefore, to start the installation:

- (1) Click on **Step 1. Install Microsoft .NET Framework 3.5 SP 1** link. This will open the DotNETFX35SP1 folder, which contains the .NET Framework 3.5 SP1 installer. In this folder, please double-click the SETUP.BAT batch file to call the .NET Framework 3.5 SP1 boot-strapper program, with the **File Download – Security Warning** dialog asking whether to **Run** or **Save** the download.
- (2) Click **Run** to install this .NET Framework. Note that if your system has previously installed version of .NET Framework 3.5 SP1, it will prompt with a Maintenance Mode dialog with the options of either **Repair** or **Uninstall**. In this case, you must select **Repair** and click **Next**. On the other hand, if your system never had the service pack installed, it will prompt with a Microsoft license agreement acceptance dialog, for which you must accept and proceed.
- (3) The .NET Framework 3.5 SP1 will take a while and when complete will inform the Setup Complete window. Click the **Exit** button of this window to proceed. Note that depending on your OS version, this may require a reboot, which the .NET installer will prompt. In this case, click the **Restart Now** button and let your system to reboot.
- (4) Step 1 is now complete. You must now get back to the **Installation.htm** page and proceed to Step 2. Note that if your system did require a reboot, you will need to reopen **Installation.htm** page if it is not already open.
- (5) Click on **Step 2. Install HySpell Armenian Spellchecker version 1.0** link to proceed to the next step of the installation process. This will open the **SpellChecker** folder. In this folder find and run the **setup.exe** executable file.
- (6) This will initiate the HySpell setup wizard, which will check whether Visual Studio Tools for the Office System 3.0 Runtime is installed on your system or not. If it is not yet installed, the setup will download and attempt to install this runtime file, which will prompt another Microsoft license agreement dialog. Click the **Accept** button to proceed.

- (7) This will install the Visual Studio Tools for the Office System 3.0 Runtime, and then continue with the HySpell setup wizard displaying a welcome window (See Figure 1 below).



Figure 1 Showing the HySpell setup wizard's welcome window.

- (8) In this window click the **Next** button to proceed to Installation Folder option. In this option, select your preferences (or leave the default installation folder option) and click **Next** button, and another **Next** button click to confirm the installation settings.
- (9) The installation process will continue and the Installation Complete page will display. Wait until the Microsoft Office Customization Installer dialog appears with the **Install** / **Don't Install** buttons active, as shown in Figure 2 below:

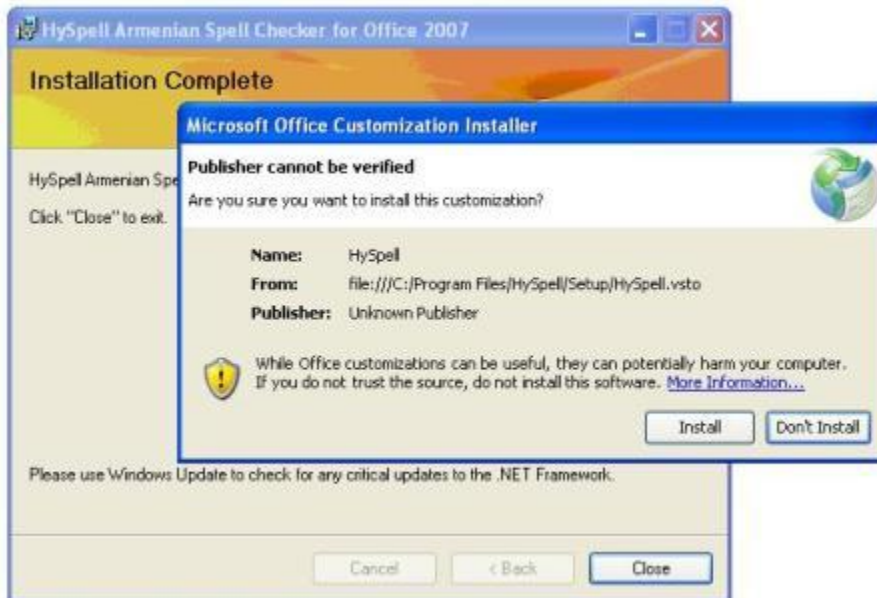


Figure 2 Showing the Microsoft Office Customization Installer dialog

- (10) In the Microsoft Office Customization Installer dialog click the **Install** button. This will install the HySpell Spellchecker program as an Add-In customization to Microsoft Office Word. The installer upon successful install will display the customization success message. You may close this dialog via the **Close** button, and also close the Installation Complete HySpell setup wizard window, in this way completing Step 2.
- (11) To install the Extended Armenian Typewriter Keyboard driver, get back to the **Installation.htm** page and click on **Step 3. Install Extended Armenian Typewriter Keyboard** link. This will open the **Keyboard** folder. In this folder find and run the **setup.exe** executable file. This will start the installation in the background and may not be visible until it comes back with an installation success message. Close the message and the installation for HySpell is complete.

Finally, for the best usage of multiple keyboards installed on your system, it is recommended to set the **Shift-Alt+ <number>** keyboard switch method. For example, to switch to English (or your system local) keyboard, press and hold left **Shift** and left **Alt** keys (together) and then click the **0**-digit key. And to switch to Armenian keyboard, you can press and hold **Shift-Alt** key combination and click the **9**-digit key. This method allows you to have more than 10 types of keyboards on your system, an ideal environment for multiple language document preparation. To setup this **Shift-Alt+ <number>** keyboard switch method on your system follow the instructions below based on your operating system type. Note that in this example, we will set two keyboard settings, namely for English and Armenian languages.

#### **Windows Vista (or above) case:**

Setting keyboard layout switch combination for Windows Vista is much simpler than that of the older Windows XP operating systems. To do so, click on Windows **Start** menu, then open the Control Panel, and find and run the **Regional and Language Options** icon. In this dialog, select the **Keyboards and Languages** tab, and click on the **Change keyboards** button. In the resulting Text Services and Input Languages dialog select the **Advanced Key Settings** tab. In this tab view, look inside the **Hot keys for input languages** list-box. You will see, among other keyboard layouts, the following items:

**To English (United States) – US**  
**To Armenian (Armenian) - Armenian**

Select the **To English (United States) – US** item and click on the **Change Key Sequence** button below the list. In the Change Key Sequence dialog, check the **Enable Key Sequence** check-box, and set the pair of the combo-boxes to **Left Alt + Shift** and **Key: 0**, and click the **OK** button.

Repeat these steps for the **To Armenian (Armenian) - Armenian** item, setting the key sequence combination to **Left Alt + Shift** and **Key: 9**.

Close the Text Services and Input Languages dialog by pressing the **OK** button, and close the Regional and Language Option dialog by pressing **OK** button.

#### **Windows XP case:**

Keyboard and language settings in Windows XP are much more limited than the newer Windows Vista (or above) operating systems. To set the keyboard switch combination, open windows **Start** menu, click on **Settings** submenu, and open the Control Panel. In the Control Panel, find and run the Regional and

Language Options dialog, and select the **Languages** tab. In the **Languages** tab view, click on the **Details** button to display the Text Services and Input Languages dialog. In this dialog, check if **Armenian** keyboard has been added to the **Keyboard** node in the **Installed services** listing. If not, then click on the **Add** button in order to add the installed keyboard. In the Add Input Language dialog, use the **Keyboard layout / IME** check-box-combo control to select the **Armenian** keyboard layout, that was installed via installation step (11). Then press **OK** to add the selected keyboard to the **Installed services** keyboard list. Click the **Apply** button to save the changes prior to setting the key settings options. Now, click the **Key Settings** button to bring the Advanced Key Settings dialog, and select the **Switch to English (United States) – US** item in the **Hot keys for input languages** list, then click the **Change Key Sequence** button. In this dialog, set the **Enable Key Sequence** combination control to the value: **Left Alt + SHIFT + Key 0**, and click the **OK** button. Repeat this same procedure for the Armenian keyboard case setting the key combination to the value: **Left Alt + SHIFT + Key 9** (if not available use another digit value). Submit the Advanced Key Settings dialog by pressing **OK**. Similarly, submit the Text Services and Input Languages dialog, and you may need a system reboot for the key settings to take effect.